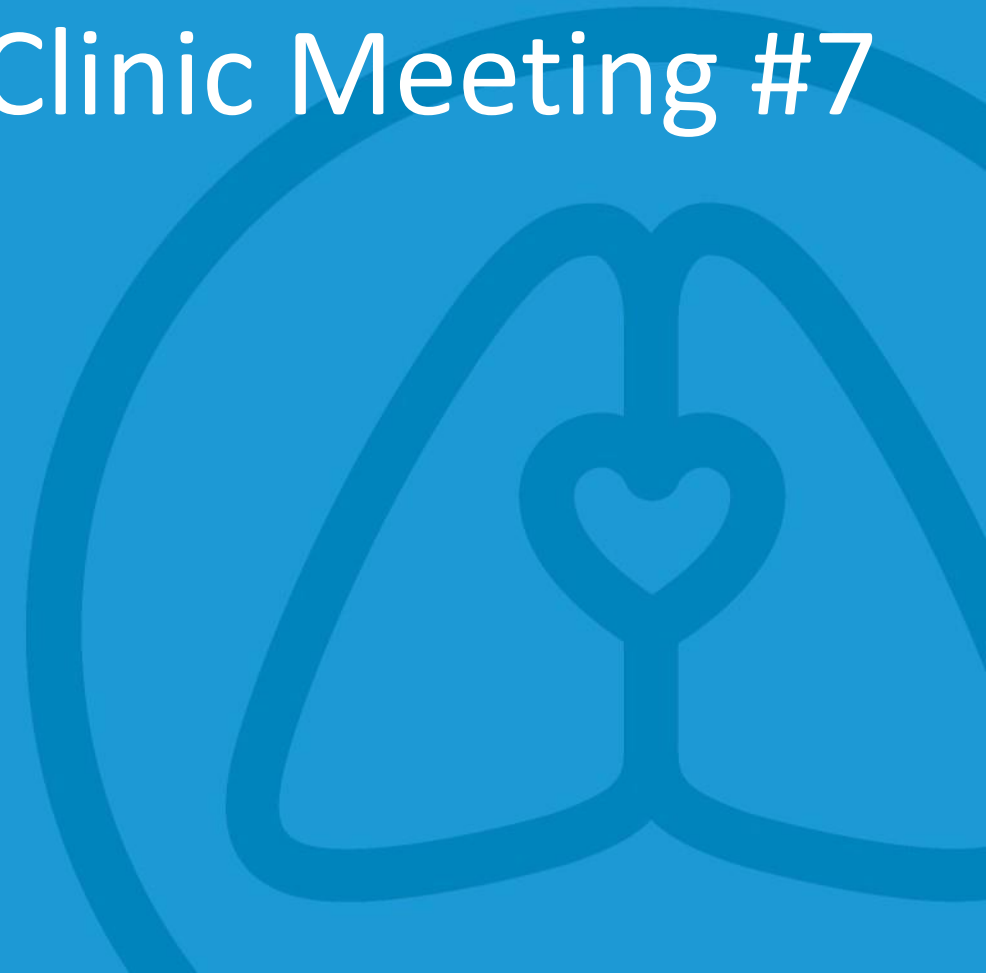




Enhancing Asthma Care

Virtual Joint Clinic Meeting #7



Overview of Today's Meeting

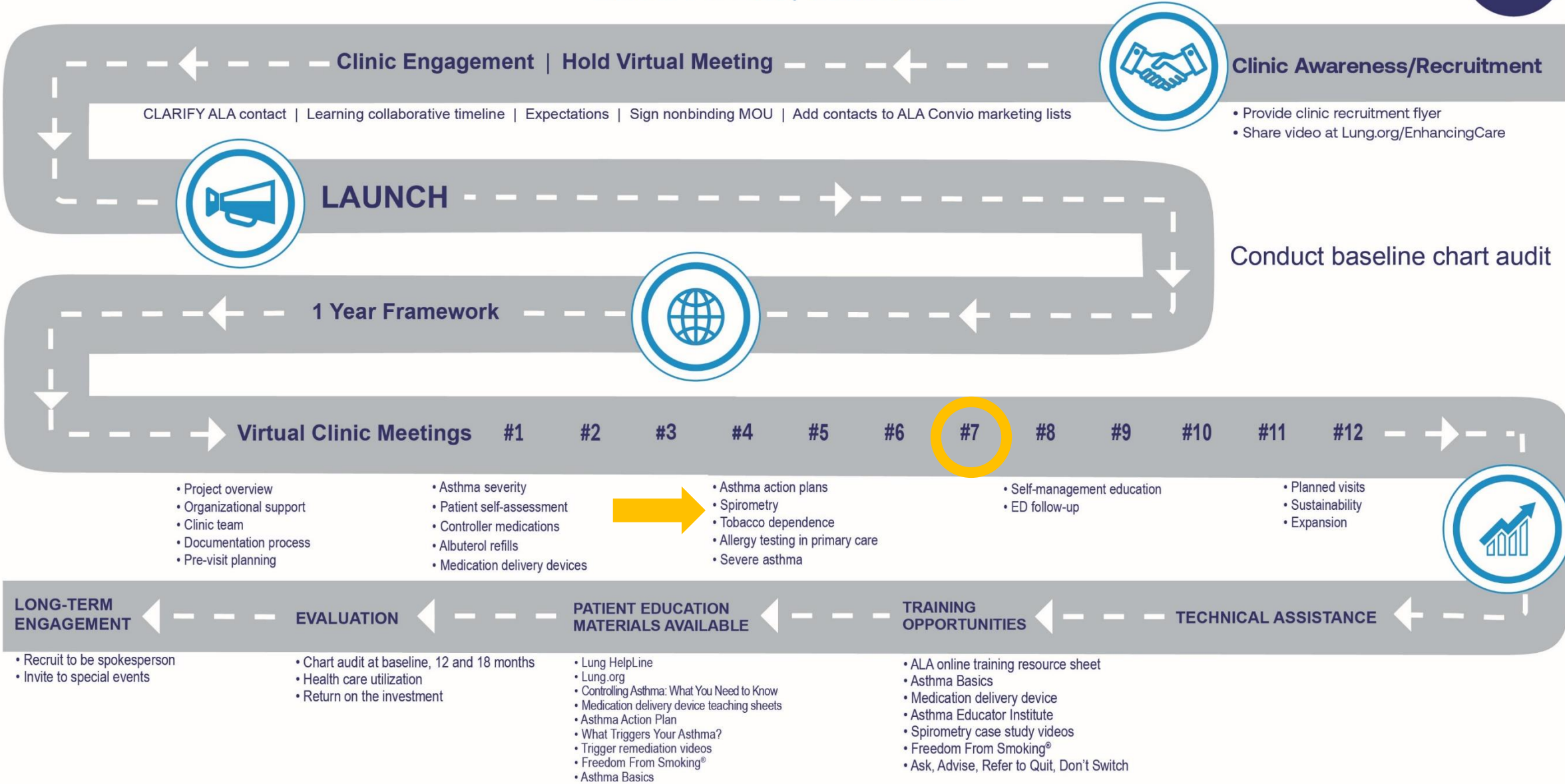


1. Clinic Updates
 - Asthma Action Plans
2. QI Component – Spirometry
3. State of the Air Report
4. Assign homework
5. Next steps/next meeting

Asthma Quality Improvement Mapping

Virtual Format | Confidential

START PROJECT



A large, light blue, stylized outline of a human lung is centered on the page. It is enclosed within a circular border of the same color. The lung is depicted with a central trachea and branching bronchi, rendered in a simplified, graphic style.

Component #11

Spirometry to confirm diagnosis and manage asthma (and COPD)

Asthma has the notoriety of being the most misdiagnosed of all diseases.



1. This was found to be true of both false positive and false negative diagnosis.
2. Primary Reason Noted: Lack of pulmonary function testing.

Spirometry is needed to confirm the diagnosis of asthma

N=701

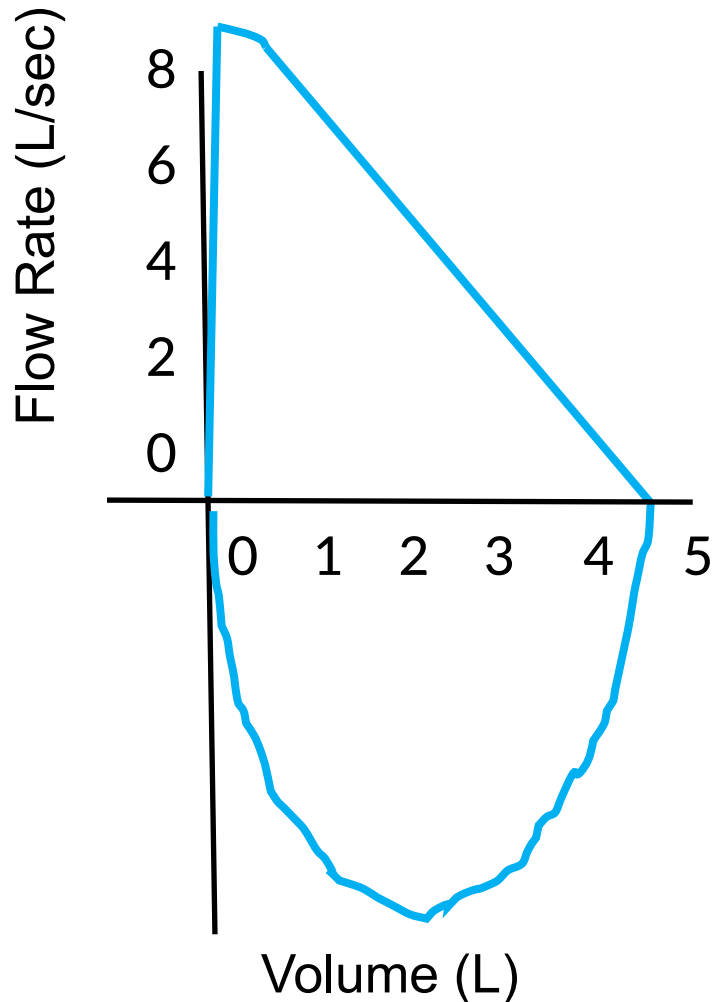
1 out of 3 did
NOT have
asthma

2% had
cardiac

JAMA 2017

Making Spirometry Work in Your Clinic(s)

Getting ready



1. Getting spirometer and printer set up
2. Training staff to implement spirometry
3. Training providers to interpret spirometry

Which patients?

- How identified?
- Order required?
- How often?

When?

- During visit?
- Return visit?

Making Spirometry Work in Your Clinic(s), *cont'd...*

Where?

- Same exam room?
- Different exam room?

Who conducts?

- All rooming staff?
- Designated person?
Alternate?

Interpretation
and
treatment
plan

- How do results get to provider?
- How does patient find out about treatment plan?

Making Spirometry Work in Your Clinic(s), *cont'd...*

Documentation

- How do results get into chart?

Storage

- Where is it stored?
- Locked up? Who has the key/code?

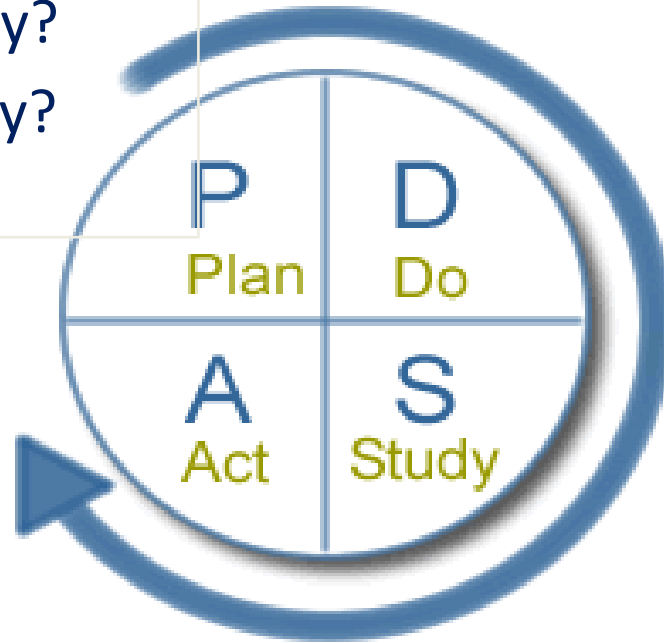
Billing

- Who codes the procedure? (94010)
- Are codes on billing sheet?

PDSA Model for Improvement

- Plan—Objective
- Who? What? Where? Why?
- What will happen and why?

- What refinements or modifications?
- What's next cycle?



- Carry out plan
- Document experience
- Collect data

- Complete analysis
- What did you learn?
- Conclusions drawn

PDSA

- Plan
- Do
- Study
- Act

Small tests of change

- Fast
- Small numbers (1 provider, 1 day, 3 patients)
- Can be done this week

Example: Spirometry

Spirometry (at Smiley's): Who?

	1	2	3
P	Christine	Four staff	Schedule
D			
S	Overwhelmed	Still go to C	Works better
A	Need other	Need schedule	Continue

Example: Spirometry, cont'd...

Spirometry: Where?

	1	2	3
P	Exam room	Nurse visit	Procedure room
D			
S	Ties up room	No shows	Works well
A	Nurse visit	Same day	Continue procedure room

Tips for PDSA Cycles



- Do more cycles:
 - smaller scale
 - faster pace
- Think of a couple of cycles ahead
- Test with volunteers first
- Don't seek buy-in or consensus for test

State of the Air Report

Key findings:

- Nearly 120 million Americans live in counties that have an unhealthy level of air pollution.
- People of color are 64% more likely to breathe polluted air compared to white people.
- The 5 worst-ranked cities for ozone and particle pollution are all in the Western U.S.
- Ozone pollution has generally improved across the nation.

Learn more, including how your state compares:

- [State of the Air | American Lung Association](#)



Homework / Taking it Back to Your Clinic



1. Assess **spirometry** (potential) **process** and attempt 2 PDSA cycles.
2. Attend/schedule **spirometry trainings**
3. Share **spirometry case studies** with providers
 - www.Lung.org/SpirometryTraining